

Achsführungen

Vorn:

- 4182-36 Big Twin, 1936-48
- 4182-48 Big Twin, 1949-66
- 4182-67 Big Twin, 1967-71

Hinten:

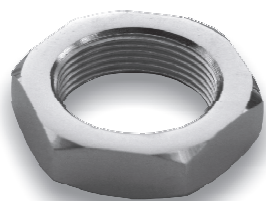
- 4008-36 Big Twin, 1936-57
- 4004-41 750'er Solo, ab 1941
- 4008-58 Big Twin, 1958-62
- 4008-63 Big Twin, 1963-66
- 4008-67 Big Twin, 1967-72

Achs-Distanzen

Vorn:

Hinten:

- 3961-30 Achsführung - Mutter, Big Twin, 1930-72, Zink
- 3961-30C Achsführung - Mutter, Big Twin, 1930-72, Chrom
- 3961-M1 Ankerplatte - Schwinge, Big Twin 1958-62, Chrom, OEM 41596-58
- 3961-M2 Ankerplatte - Schwinge, Big Twin 1963-72, Chrom, OEM 41596-63
- 4007-36 Rahmen - Nabe, Big Twin 1936-57, Zink,
- 4007-36C Rahmen - Nabe, Big Twin 1936-57, Chrom,
- 4007-38 Rahmen - Nabe, 750'er Solo, ab 1938, Zink,
- 4007-38C Rahmen - Nabe, 750'er Solo, ab 1938, Chrom



3963-30C

Muttern, Achsführung

vorn:

- 4184-30 Big Twin+WLC 1930-71, Zink
- 4184-30C Big Twin+WLC, 1930-71, Chrom

hinten:

- | | | |
|----------|----------------------------------|---------------|
| 3963-30 | Big Twin, 1930-72, Zink, | ers. OEM 8095 |
| 3963-30C | Big Twin, 1930-72, Chrom, | ers. OEM 8095 |
| 3963-30P | Big Twin, 1930-72, parkerisiert, | ers. OEM 8095 |
| 4005-35 | 750'er Solo, ab 1935, Zink | |
| 4005-35C | 750'er Solo, ab 1935, Chro | |
| 4005-35P | 750'er Solo, ab 1935, park. | |